

SOUND STAGE #1

STAGE:

DIMENSIONS: **100' x 70'** (7,000 SQ. FT. - SEE FLOOR PLAN)
30' HEIGHT TO TRUSSES
22' HEIGHT TO BOTTOM OF CATWALK
75' x 62' x 40' x 23' HIGH 3-WALLED HARD CYC *

FEATURES:

- 30 TON AIR CONDITIONING SYSTEM
- CATWALK SYSTEM (SEE FLOOR PLAN)
- **2400** AMPS ELECTRICAL SERVICE (CONFORMS TO NEC CODES)
- FULLY SOUND INSULATED
- ALL DOORS SOUND INSULATED
- AIR EXHAUST SYSTEM
- DARKROOM
- **PRE-INSTALLED** MOTORIZED TRUSS SYSTEM AND **2400** AMP DIMMER SYSTEM IS AVAILABLE AT AN ADDITIONAL COST.

PRODUCTION AREA:

DIMENSIONS: **51' x 50'** (2,550 SQ. FT. - SEE FLOOR PLAN)

FEATURES:

- WORKING KITCHEN
- DRESSING ROOMS WITH SHOWER
- LAUNDRY FACILITIES
- PRODUCTION OFFICE
- CONFERENCE ROOM
- AIR CONDITIONED
- FOLDING CHAIRS, TABLES AND DIRECTORS CHAIRS INCLUDED.

GENERAL:

FEATURES:

- SECURITY SYSTEM
- HIGH SPEED WIRELESS INTERNET AVAILABLE
- 7 PHONES WITH 4 LINES, 3 FAX/MODEM JACKS **
- AMPLE OFF STREET PARKING AND LOADING AREAS
- PRIVATE RIVERFRONT LANDSCAPE AREA
- ADDITIONAL OFFICE AND STORAGE SPACE AVAILABLE
- IMMEDIATE ACCESS TO ONE OF THE MIDWEST'S LARGEST INVENTORY OF EQUIPMENT AND SUPPLIES

RATES:

BASIC DAY:	8:00 AM - 6:00 PM
PREP OR STRIKE	1500.00 PER DAY
PRE-LIGHT OR SHOOT	2000.00 PER DAY
OVERTIME	150.00 PER HOUR
WEEKENDS	300.00 ADD'L. DAILY
WEEKEND OVERTIME	175.00 PER HOUR
RUBBISH DISPOSAL	10.00 PER YARD
WI-FI	20.00 PER DAY
POWER: PRE-LIGHT OR SHOOT	400.00 PER DAY

DISCOUNTS:

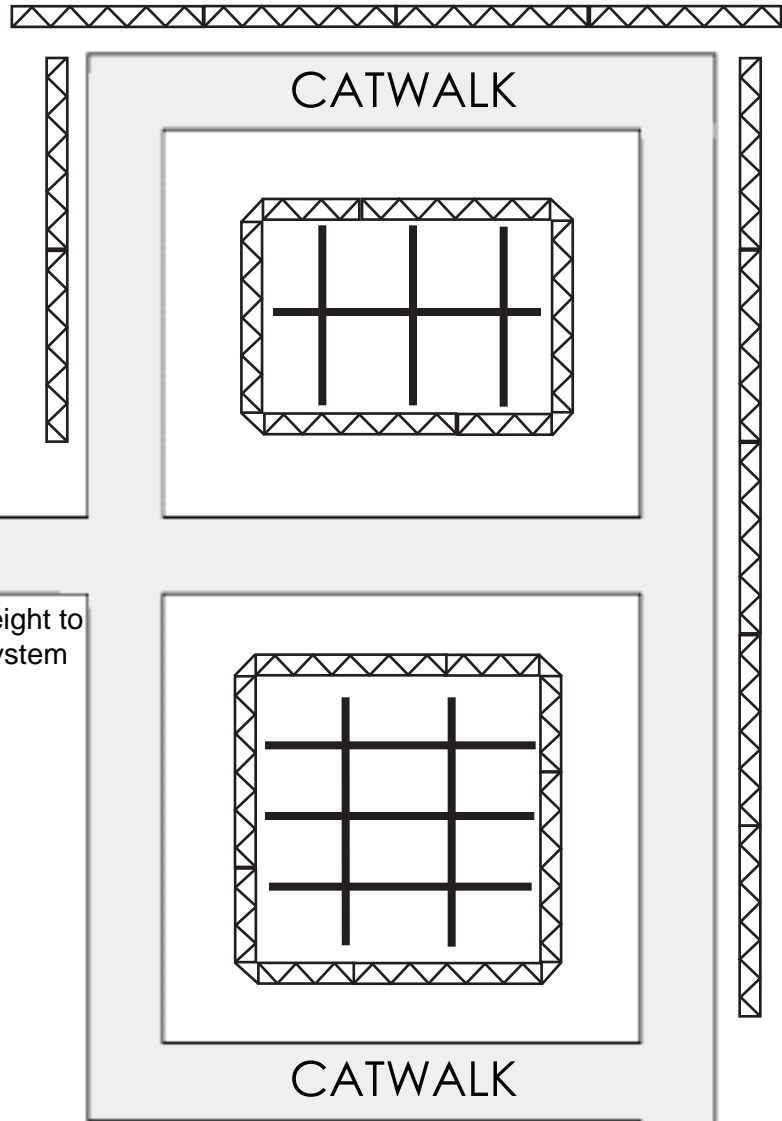
- **BASIC STAGE DAY RATE SUBJECT TO 10% DISCOUNT AND POWER AT NO CHARGE** IF ESSANAY SUPPLIES ALL GRIP AND LIGHTING EQUIPMENT.
- **STAGE RATES INCLUDE A HOUSEMAN PRESENT AT ALL TIMES AT NO ADDITIONAL CHARGE.**

* CYC IS FURNISHED PURE WHITE AND MUST BE IN SAME CONDITION AT END OF RENTAL

** LOCAL CALLS INCLUDED - LONG DISTANCE CALLS REBILLED AS USED

Cyclorama Walkway

3-Walled Cyclorama
40' x 62' x 75' x 23' HIGH



22' Clear Height to
Catwalk System



Production Area

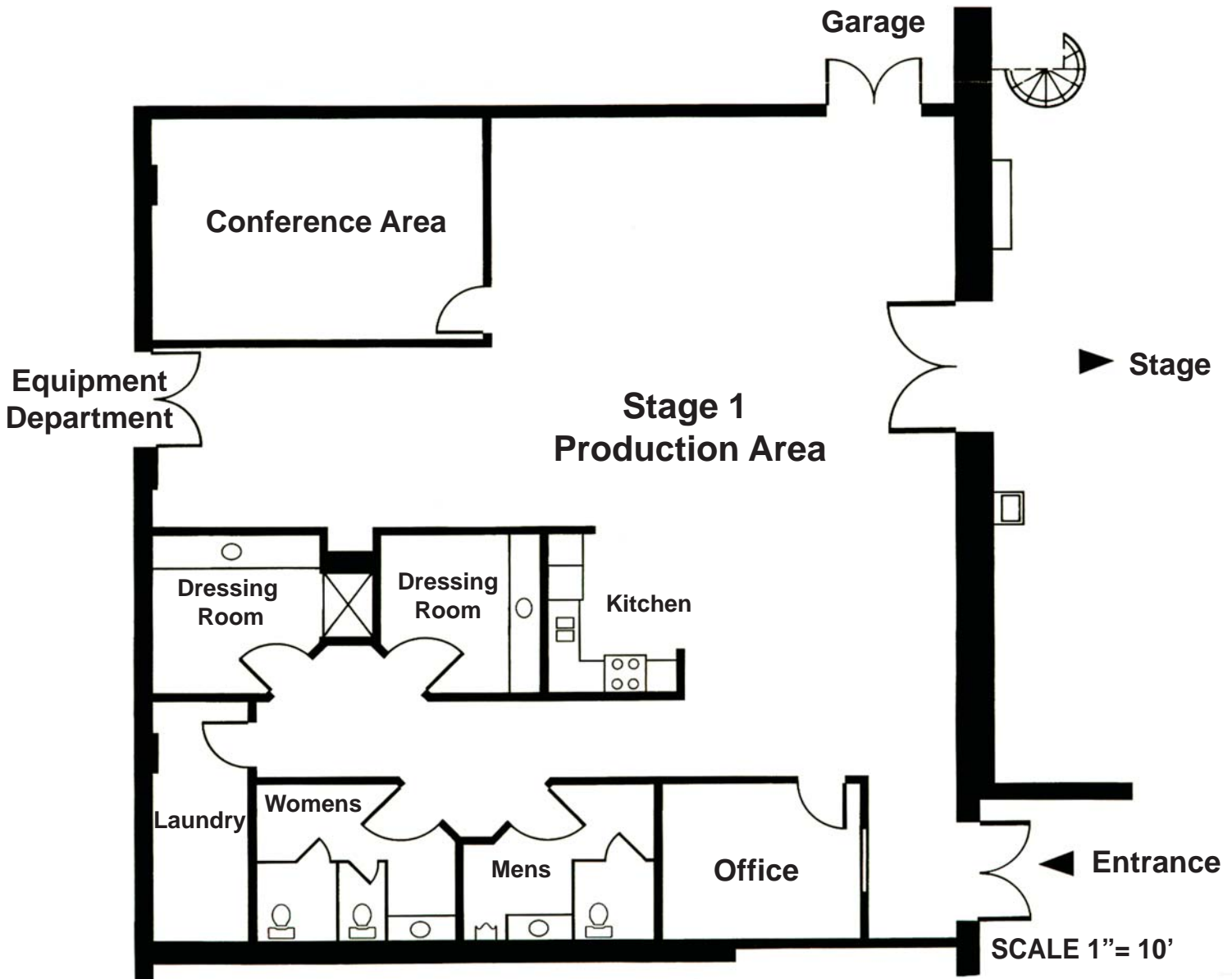
STAGE 1
100' x 70'

Portable
Darkroom

Entrance

14' x 14' Sound Doors

Scale: 1" = 10'
[Truss Symbol] = Truss



SOUND STAGE # 2

STAGE:

DIMENSIONS: **50' x 50'** (2,500 SQ. FT. - SEE FLOOR PLAN)
19' CLEAR HEIGHT TO TRUSSES
27' x 42' x 20' x 16' HIGH 3-WALLED HARD CYC *

FEATURES:

- 17 TON AIR CONDITIONING SYSTEM
- **1800** AMPS ELECTRICAL SERVICE (CONFORMS TO NEC CODES)
- FULLY SOUND INSULATED
- ALL DOORS SOUND INSULATED
- AIR EXHAUST SYSTEM
- DARKROOM

PRODUCTION AREA:

DIMENSIONS: **52' x 50'** (2,600 SQ. FT. - SEE FLOOR PLAN)

FEATURES:

- WORKING KITCHEN
- DRESSING ROOMS WITH SHOWER
- LAUNDRY FACILITIES
- PRODUCTION OFFICE
- CONFERENCE ROOM
- AIR CONDITIONED
- FOLDING CHAIRS, TABLES AND DIRECTORS CHAIRS INCLUDED.

GENERAL:

FEATURES:

- SECURITY SYSTEM
- HIGH SPEED WIRELESS INTERNET AVAILABLE
- 6 PHONES WITH 4 LINES, 3 FAX/MODEM JACKS**
- AMPLE OFF STREET PARKING AND LOADING AREAS
- PRIVATE RIVERFRONT LANDSCAPE AREA
- ADDITIONAL OFFICE AND STORAGE SPACE AVAILABLE
- IMMEDIATE ACCESS TO ONE OF THE MIDWEST'S LARGEST INVENTORY OF EQUIPMENT AND SUPPLIES

RATES:

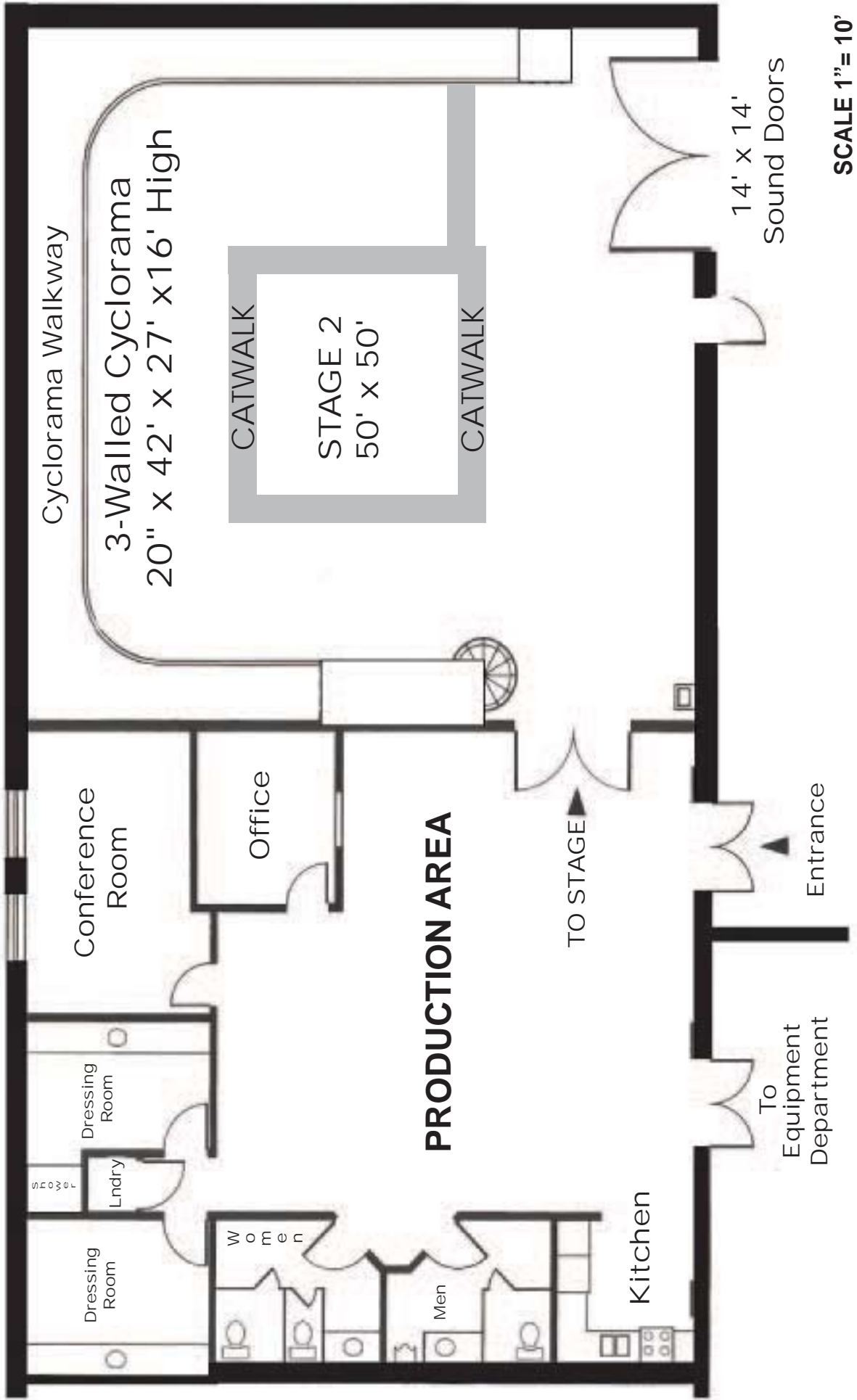
BASIC DAY:	8:00 AM - 6:00 PM
PREP OR STRIKE	800.00 PER DAY
PRE-LIGHT OR SHOOT	1100.00 PER DAY
OVERTIME	100.00 PER HOUR
WEEKENDS	200.00 ADD'L. DAILY
WEEKEND OVERTIME	125.00 PER HOUR
RUBBISH DISPOSAL	10.00 PER YARD
WI-FI	20.00 PER DAY
POWER: PRE-LIGHT OR SHOOT	250.00 PER DAY

DISCOUNTS:

- BASIC STAGE DAY RATE SUBJECT TO **10% DISCOUNT** AND POWER AT **NO CHARGE** IF ESSANAY SUPPLIES ALL GRIP AND LIGHTING EQUIPMENT.
- STAGE RATES INCLUDE A HOUSEMAN PRESENT AT ALL TIMES AT **NO ADDITIONAL CHARGE**.

* CYC IS FURNISHED PURE WHITE AND MUST BE IN SAME CONDITION AT END OF RENTAL

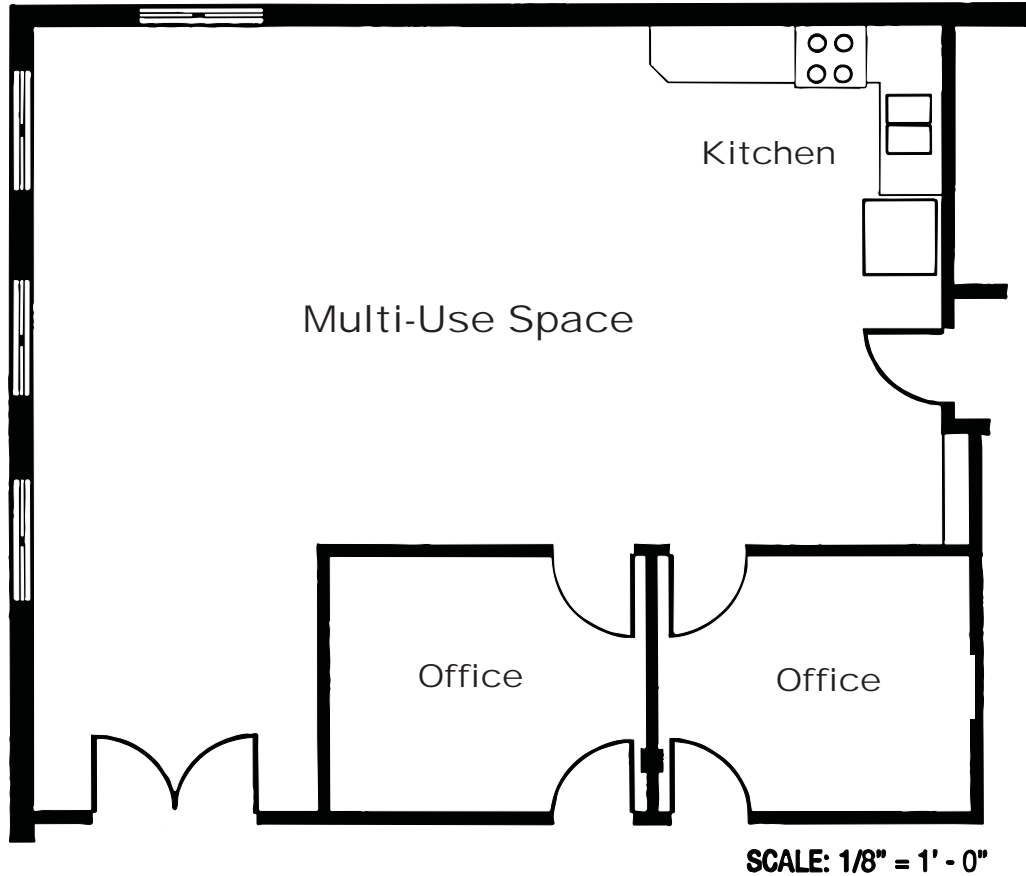
** LOCAL CALLS INCLUDED - LONG DISTANCE CALLS REBILLED AS USED



SCALE 1" = 10'

PRODUCTION OFFICES/MULTI-USE SPACE

This area accomodates a wide variety of uses including: production office base (ideal for out-of-town) companies, pre-pro meetings, wardrobe fittings, general storage, prop area or any time space is needed - either together with rental of a stage or separately- it can even accomodate a small insert shoot.



PRODUCTION OFFICES/ MULTI-USE SPACE

DIMENSIONS: **820 SQ. FT. x 12' CLEAR HEIGHT**
2 PRODUCTION OFFICES- 120 SQ. FT. EACH

- FEATURES:
- WORKING KITCHEN
 - 450 AMPS ELECTRICAL SERVICE
 - AIR CONDITIONED
 - 4 PHONES WITH 4 LINES*
 - HIGH SPEED WIRELESS INTERNET AVAILABLE
 - 2 FAX/ MODEM JACKS
 - SECURITY SYSTEM
 - AMPLE OFF STREET PARKING AND LOADING AREAS
 - PRIVATE RIVERFRONT LANDSCAPE AREA

RATES

GENERAL USE: 400.00 DAILY
(300.00 IF ESSANAY SUPPLIES THE GRIP AND LIGHTING PACKAGE FOR THE PRODUCTION)

WI-FI 20.00 PER DAY

*LOCAL CALLS INCLUDED- LONG DISTANCE REBILLED AS USED.